

# KCP40RX170



## BOOM SPECIFICATIONS

Vertical reach	39.7 M	(130' 3")
Horizontal reach	35.7 M	(117' 2")
Reach from front of truck	32.6 M	(107')
Unfolding height	9.3 M	(30' 6")
Section articulation	92° / 187° / 240° / 245°	
Rotation	370°	
Delivery line	125 mm	(5")
Proportional boom	Yes	
End hose length	3.5 M	(11' 6")
Outrigger spread-front	6.18 M	(20' 3")
Outrigger spread-rear	8.1 M	(26' 7")
Max. outrigger weight	24,500 kg	(54013 lbs)

## PUMP SPECIFICATIONS

Maximum output	170 m <sup>3</sup> /h	(222 yd <sup>3</sup> /h)
Concrete cylinder	Ø230 x 2100mm	(9" x 83")
Stroke per minute	32	
Concrete pressure	70 bar	(1015 psi)
Hopper capacity	0.6 m <sup>3</sup>	(21 ft <sup>3</sup> )
S-tube	Ø230 x Ø180	(9" x 7") Big mouth
Hydraulic pump	Rexroth A11VL0260	
Cycling system	Hydraulic with manual overrides	
Max aggregate size	40 mm	(1 1/2")
Water Tank Volume	600 L	158.4 Gal

\* Maximum theoretical values listed.

\*Dimension will vary with different truck makes, models and specifications.

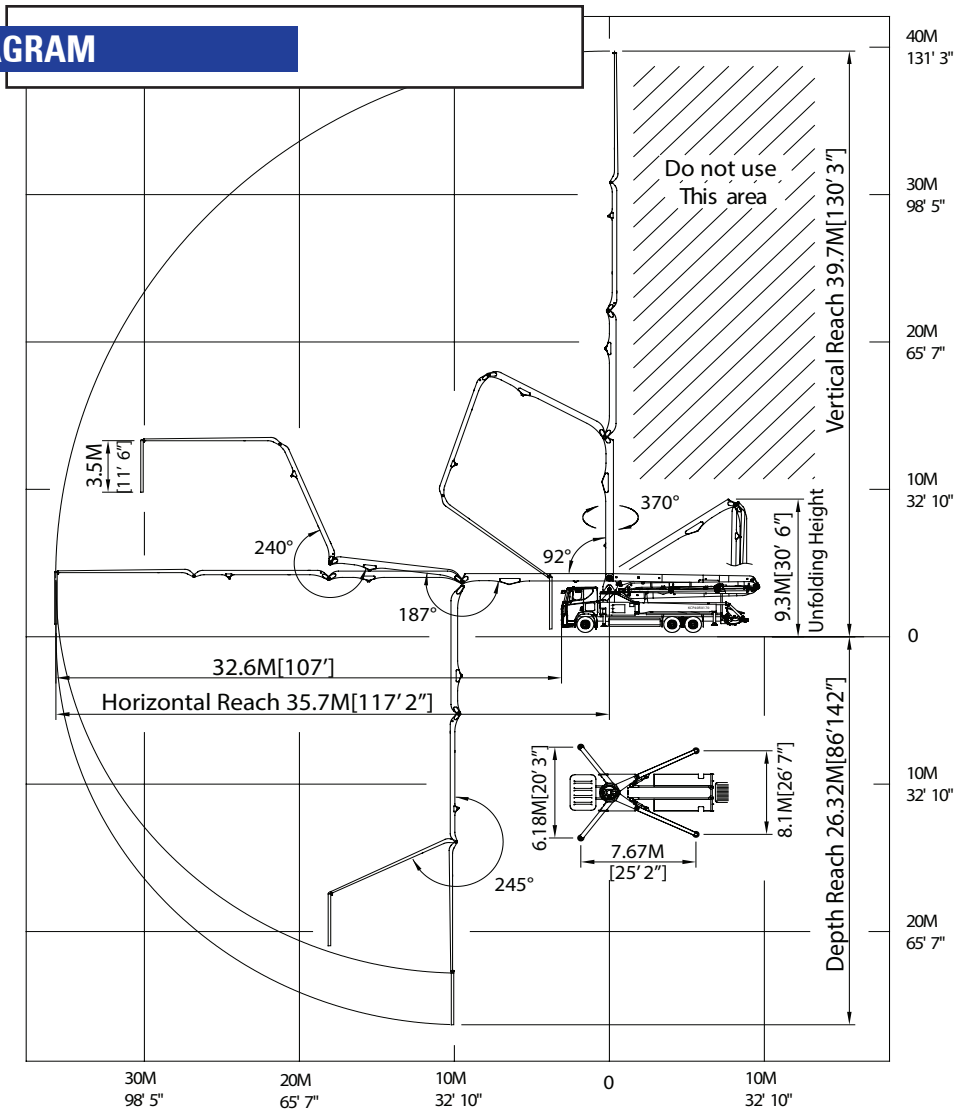
\*Right to make technical amendments reserved.

## TRUCK MOUNTED SPECIFICATIONS

Available: MR MACK, GRANITE MACK, PETERBILT, INTERNATIONAL, FREIGHTLINER.

**Simply the Best.**

## WORKING DIAGRAM



## WEIGHT DIAGRAMS

\*Photos and drawings are for illustrative purpose only.  
 \*Dimension will vary with different truck makers, models and specifications.  
 \*Right to make technical amendments reserved.

